

BOILERS

Whether you need boiler installation or repair of steam, hot water or recovery boilers in virtually any setting, turn to EIMS. Our services span from the installation, service and boiler repair in residential and commercial environments to the construction, maintenance and repair of boilers serving pulp and paper mills; the energy industry, including refineries and gasification plants; and countless other industrial applications.



CONVEYOR

Conveyor systems are used in a variety of industries to move materials, reducing the need for human labor and boosting facility efficiency and productivity. By reducing the amount of human exertion needed to move materials, conveyor systems also reduce injury risk. Conveyor systems have also been found to be safer than using forklifts to transport materials, which garners another safety benefit.



BATCHING PLANT

Maintenance of Ready-Mixed Concrete Batching Plant
For an effective production & delivery of concrete, all plant & equipment should be maintained in a clean and efficient working condition. To achieve this, checklists are used by the batching plant personnel. These checklists include daily checks, weekly checks, monthly checks and quarterly checks. Checklists must be prepared in such a manner so that they cover the following 3 basic components of ready-mixed concrete batching plant.



Company Profile

EiMS is a world-class service company. We provide an array of specialty services related to the maintenance of Generators, Controls, Engines, Motors, Milling Machines, Bottling Machines, Conveyors, Boilers, Batching Plants, inspection and audit. Our success depends on skilled and committed EiMS colleagues throughout our organization supported by the industry's best training, equipment, technology, and technical support. We recognize that our success ultimately is a result of our customers' trust and confidence, which is earned through continuing outstanding service.

Vision

Maintain our leadership as the safest, preferred supplier of specialty services and products, and to grow into a billion dollar worldwide service company.



Values

- Safety First in everything we do
- Integrity means doing the right thing
- Service Leadership throughout the company
- Innovation supports continuous growth and improvement
- Pride and Respect for ourselves and our company

History

- Founded by a group of engineers, currently in East Africa and hoping to expand to cover the whole of Africa

GENERATORS



You can rely on EiMS to provide dependable and professional maintenance and repair solutions for your Generators, small or large. Maintenance solutions are designed in house and are tailored specifically to the needs and risk rating of your business to ensure you have cost-effective reliable Emergency Power.

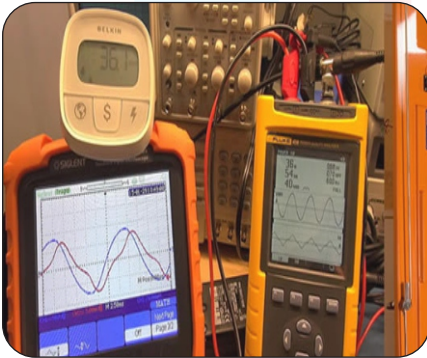
Our experienced team of Electricians and Diesel Mechanics have the capability to not only look after your Generators but also the associated equipment such as Diesel Storage Systems, Fuel Transfer Pumps, Dummy Load Banks and Automatic Transfer Switches.

UPS

EiMS have specialised in supply, service and repair of Uninterrupted Power Supplies up to 1100kVA. Our UPS preventative maintenance contracts provide you with 24/7 access to our highly trained technicians and large range of spare parts and loan equipment. From specification through to project delivery and whole of life maintenance, our team focus on ensuring your UPS installation is designed well, commissioned correctly, and maintained well to provide many years of reliable service.



POWER FACTOR CORRECTION (PFC)



EiMS recommends annual servicing for Power Factor Correction units, however, if the unit is in a hot or dusty environment, six-monthly servicing may be more appropriate.

Regular testing and servicing will ensure that PFC equipment continues to operate effectively, preventing the increased costs associated with poor power factor. Our PFC annual maintenance program ensures that the system is provide the right amount of correction for your electrical installation, and ensures that all components are operating within manufacturers specification.

CONTROL PANELS

EiMS build control systems for any customer's generator, LV/HV switchgear and UPS system. We will also build bespoke designs for any control system and have built control panels for the local water authorities and HVAC companies. We have the in house capability to design, draw, procure, manufacture and test panels to your specification.



PLANT ENGINEERING

Plant Engineering is the function responsible for planning, designing, specifying, installing, modifying and maintaining plant facilities, systems and equipment. Our Plant Engineering team incorporates engineers experienced in the design and maintenance of industrial processing plants.



PACKAGING EQUIPMENTS



EiMS has extensive experience in food and high speed packaging machine maintenance. Our technicians backed by our deep bench and engineering staff are second to none in supporting and enhancing product delivery of food and other consumer products.

PROCESS EQUIPMENTS

EiMS process maintenance will assist you in devising the best maintenance strategy for your factories and Machine. Our field services on-site teams and experts will evaluate the condition of your critical equipment and develop the right maintenance program aligned with your plant's business needs. Eliminating defects on the highly critical equipment is our main objective and it will have an immediate impact on plant performance and safety.



FILLING EQUIPMENTS



Our in house mechanical team provides installation and maintenance services across a wide range of systems found in the industrial environment

MILLING EQUIPMENTS

Daily Maintenance of Flour Milling Equipment: If you pay attention to the daily maintenance of your flour milling equipment, it will be like a good friend to accompany you. So it's necessary to do the daily maintenance and upkeep of your flour milling plant. A flour milling equipment can have a better performance if you attach more importance to its operating and upkeep.



MINIMIZING DOWNTIME

Mobile:+254 782 914 717



MAXIMIZING PERFORMANCE

Website: www.emersoniems.com Email: info@emersoniems.com

MINIMIZING DOWNTIME

Mobile:+254 782 914 717



MAXIMIZING PERFORMANCE

Website: www.emersoniems.com Email: info@emersoniems.com

MAINTENANCE OF HYDRAULIC SYSTEMS

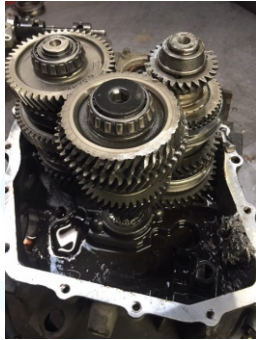


Lack of maintenance of hydraulic systems is the leading cause of component and system failure yet most maintenance personnel don't understand proper maintenance techniques of a hydraulic system. The basic foundation to perform proper maintenance on a hydraulic system has two areas of concern. The first area is Preventive Maintenance which is key to the success of any maintenance program whether in hydraulics or any equipment which we need reliability. The second area is corrective maintenance, which in many cases can cause additional hydraulic component failure when it is not performed to standard.

TRANSMISSION, AXLE AND GEARBOXES REPAIRS

The maintenance of the undercarriage provides checking the density and tightening of the bolts, level control, and timely replacement of oil in gear system and crankcases, adjusting tapered bearings, gearing of the final drive pinion. It is necessary to maintain the cleanliness of drive axles and periodically clean the breather channels.

Our engineers have the experience required to work with the complex challenges industrial gearboxes present. We have worked across a variety of sectors repairing gearboxes for many varying applications



INJECTOR PUMP AND NOZZLES

Not only do we offer our customers the ability to purchase our fuel injection pumps, but we also offer them our fuel injection repair and rebuild service. This service is offered to help deter further costs in the future. Rebuilding injection pumps usually has an average cost of Kshs 30,000. here at Emerson Industrial Maintenance Services Depending on how extensive the repair or rebuild is, the price can be cheaper or more expensive. Providing maintenance on your fuel injection pump can help ensure a further life-span than if not serviced. Fuel injection pumps are not cheap, so we recommend fuel injection repairs and rebuilds to help maintain the efficiency of your fuel injection pump.



TRACTOR MAINTENANCE

The tractor plays an important role in agriculture mechanism field. To keep your tractor well-working for a long time in lowest expenses, it requires a proper and time to time maintenance.

KhetiGaadi provides you the daily basis maintenance guidelines, which has collected by the tractor manufacturers and tractor dealers. To make your tractor efficient and cost effective, avail the services of a skilled mechanic; use the right grade of oil and genuine spare parts.



FORKLIFT TRUCKS



Regular forklift maintenance and servicing is imperative to keep machines running correctly. A well-maintained machine will provide you with years of reliable and safe service. A neglected machine will break down more frequently, require replacement sooner and, most importantly, put your operators at risk. If you want get the most out of your investment and help reduce forklift accidents, preventative maintenance is a must. Here are 6 of the most important steps you should take to ensure your machines run properly.

Maintenance Services

As today Plants are designed with advanced technology in order to achieve high efficiency and output, they require complicated and precise plant maintenance in order to maintain their performance and prolong their lifetime.

With our staff's long term experience in Plant Maintenance, we can provide a variety of professional Maintenance Services for Power Generation, Constructions and Quarry, Farm Machineries and Manufacturing Industries.

Training Services

Due to the rapid growth in the Power Generation Industry in Thailand, the existing personnel in this field are insufficient to meet industry demand. Training of new and inexperienced personnel is required to reduce personnel shortage problems.

We therefore provide Training Services to Machine Operators and in house technicians

- Training for Operation Staff providing fundamental technical knowledge of equipment, protection & control systems and operation procedures.
- Training for Maintenance staff providing fundamental knowledge necessary to perform maintenance work on generators and construction equipments.

MINIMIZING DOWNTIME

Mobile:+254 782 914 717



MAXIMIZING PERFORMANCE

Website: www.emersoneims.com Email: info@emersoneims.com

MINIMIZING DOWNTIME

Mobile:+254 782 914 717



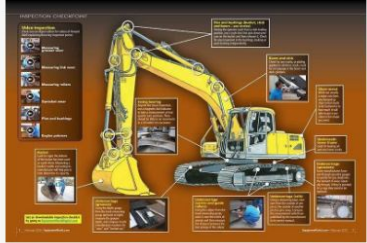
MAXIMIZING PERFORMANCE

Website: www.emersoneims.com Email: info@emersoneims.com

CONSTRUCTION EQUIPMENTS



Owning and operating a construction company is not without its challenges, the biggest of which is operating and maintaining a fleet of high-value heavy machinery. Not only can the cost of equipment go well into the millions, but the price of repairing or replacing faulty machines and the subsequent toll this can take on company expenses can be staggering.



Preventive maintenance is a little more robust than routine maintenance, taking a big picture approach. Service technicians look for problems in the making, performing maintenance while the equipment is still working to avoid unexpected breakdowns.

Preventive maintenance can be time-based (scheduled inspections) or usage-based (every 10,000 km). As you can tell, preventive maintenance is more costly than routine maintenance, which is why it is also important to strategically choose which equipment to routinely maintain and which can benefit from preventive maintenance.

If your construction equipment serves a critical function to business operations or the probability of a break-down increases with prolonged time or usage, you may want to consider a preventive maintenance program for them.



OUR COMMITMENT

“Quality without Compromise”

We express our commitment to quality by having a genuine interest in excellence and hand-crafted attention to detail with work documented at every step by our staff at all levels from technicians to managers.

We begin with our service attitude by listening to our customers and give personal attention to their needs and deliver more than they expect.

We provide our staff with quality and reliable equipment and tools to ensure the highest quality of our work. We deliver value through our dedication to our work and we deliver to our customers positive results such as greater power output, better performance, improved reliability and availability and longer equipment life.

Finally, we are competitive as a result of our dedicated work application from the start to the end of each project. We achieve quality at a competitive price. Our precise, timely and cost effective procedures assure long term value to our customers. Our commitment to all of our customers in order to maximize all aspects of our customer's satisfaction.

MINIMIZING DOWNTIME

Mobile:+254 782 914 717



MAXIMIZING PERFORMANCE

Website: www.emersoniems.com Email: info@emersoniems.com

SOLAR PANEL MAINTENANCE



Luckily, solar panels require minimal maintenance to ensure they keep working properly and producing solar energy for your home. The most common type of maintenance required for your panels is cleaning.

Dirt and debris can collect on your panels, especially during storms or extended periods without rainfall. Occasional cleaning can remove this debris and ensure that your solar panels get the optimal amount of sunlight.

The other type of maintenance you may wish to do for your solar panels is an annual inspection. During a solar panel inspection, a professional -- often someone from your solar panel installer -- will come to your home and take a look at your panels, just to make sure everything is working as it should.

Any other maintenance appointments can simply be scheduled as needed if and when you notice a problem with your solar panels or that they aren't producing energy as they should.

Using a monitoring app can help you keep track of the amount of energy your panels produce. If you notice a dip in production, it might be time to clean your panels.

Solar panel maintenance and cleaning is not covered under panel warranties, but if your solar panels are damaged, they will usually be covered.

MINIMIZING DOWNTIME

Mobile:+254 782 914 717



MAXIMIZING PERFORMANCE

Website: www.emersoniems.com Email: info@emersoniems.com